



WAREHOUSE MANAGEMENT SYSTEM



360° Warehouse View

End to end Supply Chain Integration

Powerful BI & Analytics

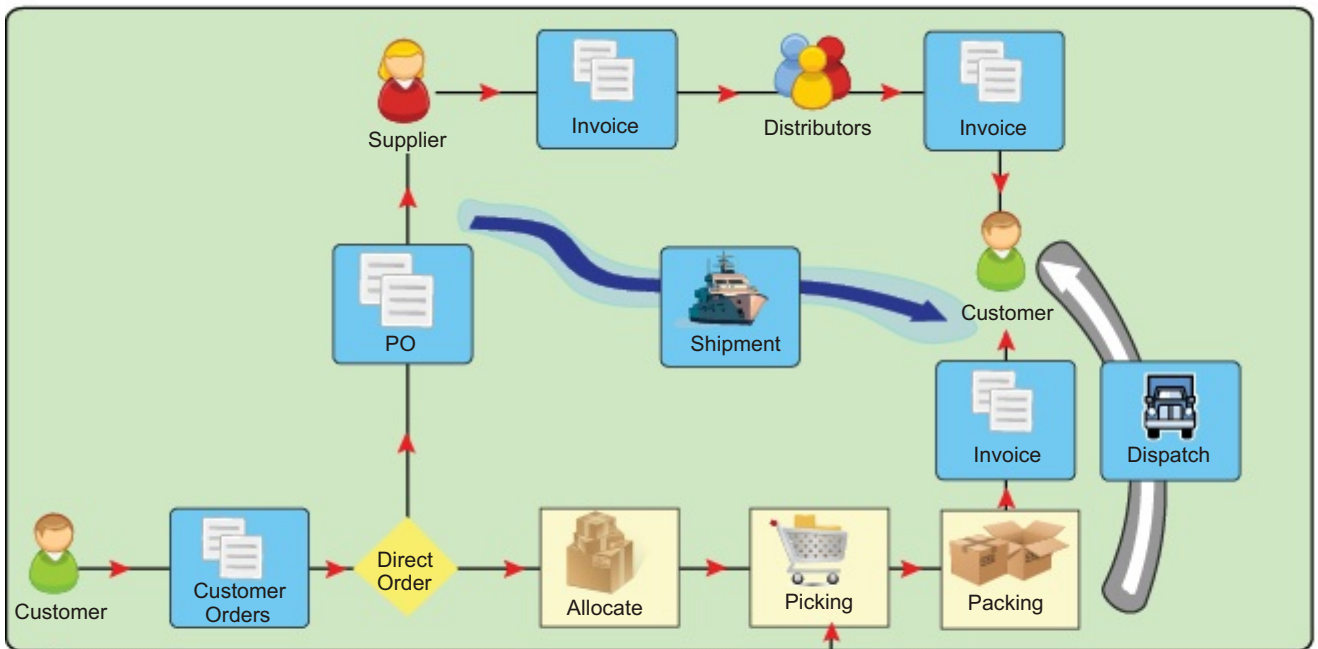
Service Oriented Architecture

PALMS Warehouse Management System provides configurable Supply Chain processes required by companies to provide better customer service and control operational costs. Highly advanced logic based stock put away, collection and intelligent direct stock movement features in PALMS helps dramatically control labor costs and space utilization. The solution based on its Service Oriented Architecture offers full integration to sales, purchasing, logistics and other 3rd party systems. This helps companies meet customer expectations on how they want their orders sourced, packaged and shipped. Such features make PALMS the preferred solution for warehouse automation and achieve faster ROI.

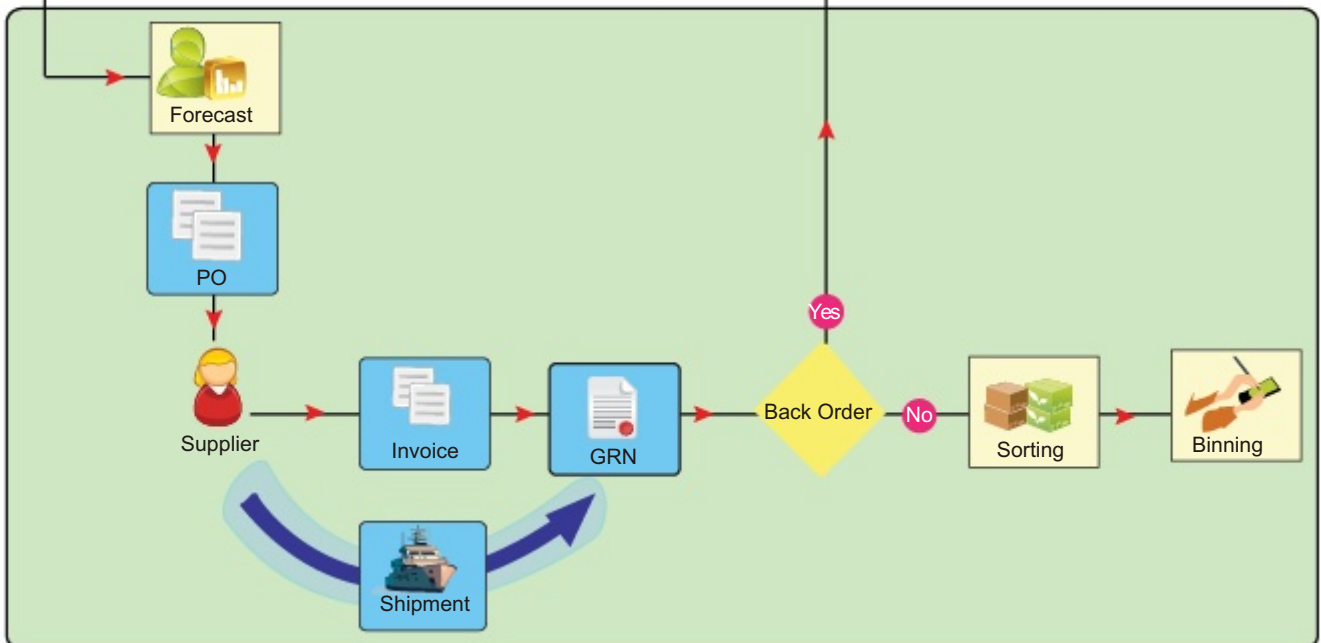
At the highest levels, improvement areas where PALMS Warehouse Management Application shows fast ROI can be summarized as follows:

- Efficient Forecasting Algorithms ensure Optimal Inventory Positions resulting in Direct Cost Savings
- Bar Code, RFID and Voice Picking enabled processes for efficient & accurate material movement
- Improved Utilization & Tracking of Man Hours through live monitoring dashboards
- Faster decisions improving the ROI of overall SCM operations
- Empower the business through increased access to holistic, consistent enterprise information
- Improved business performance, increased profitability, streamlined operational efficiency and proactive management of regulatory compliance

Outbound Process Overview

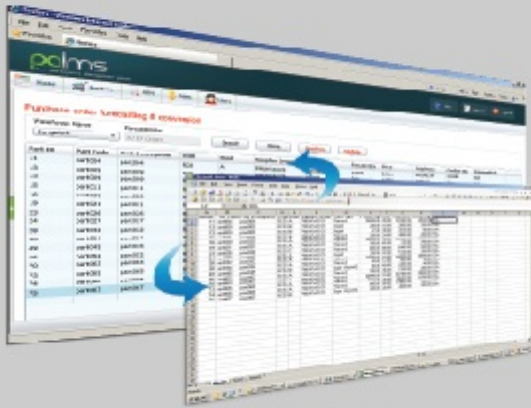


Inbound Process Overview

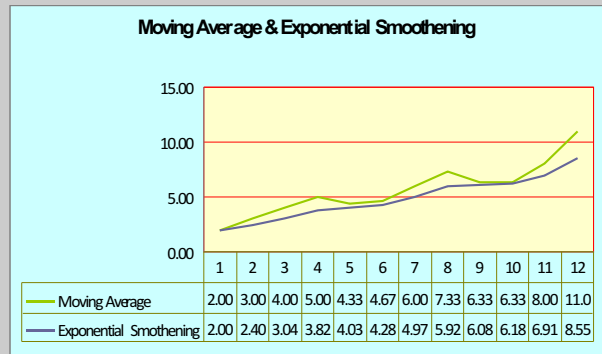


Key features of PALMS WMS

- Fully excel compliant grids with copy and paste feature from application grid to excel and vice versa



- Multiple Forecasting Models incorporating exponential smoothing for demand spikes & drops



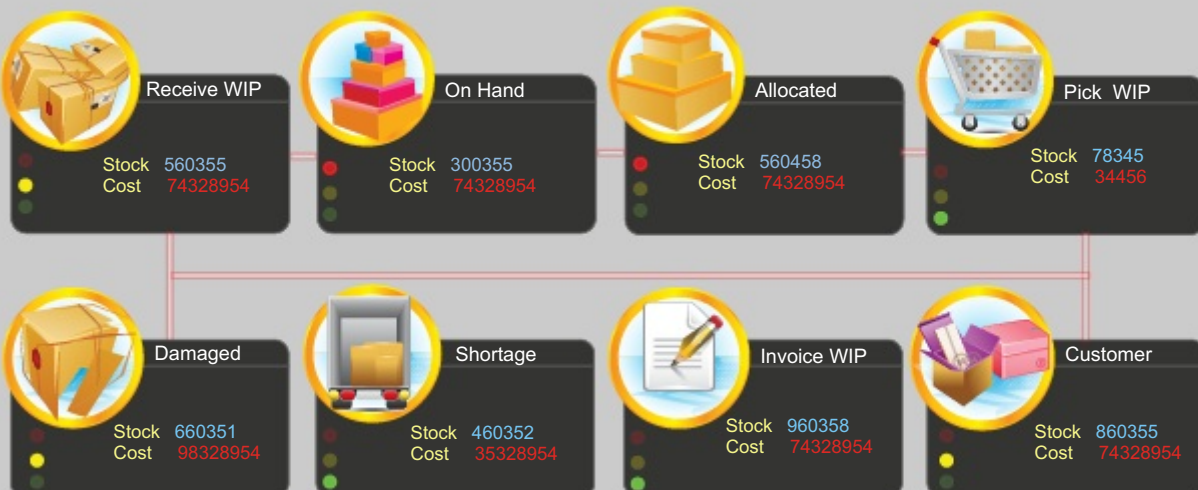
- Advanced Warehouse Location Management with configurable racks and locations leading to optimal warehouse space utilization and faster ROI



- Clear visibility of KPI through powerful, interactive Business Intelligence & Analytics dashboards warehouse space utilization and faster ROI

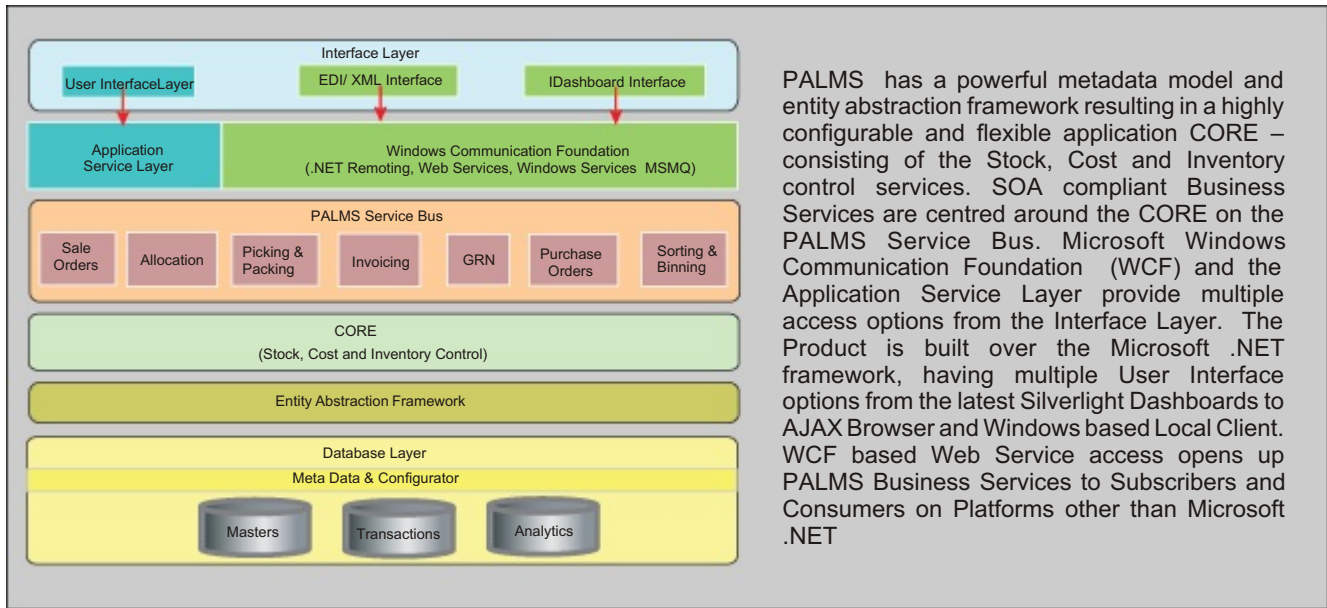


- 360° view with configurable stages, targets and advanced tools for monitoring



Architecture

- SOA based Architecture developed on state of the art Microsoft .Net Framework



PALMS has a powerful metadata model and entity abstraction framework resulting in a highly configurable and flexible application CORE – consisting of the Stock, Cost and Inventory control services. SOA compliant Business Services are centred around the CORE on the PALMS Service Bus. Microsoft Windows Communication Foundation (WCF) and the Application Service Layer provide multiple access options from the Interface Layer. The Product is built over the Microsoft .NET framework, having multiple User Interface options from the latest Silverlight Dashboards to AJAX Browser and Windows based Local Client. WCF based Web Service access opens up PALMS Business Services to Subscribers and Consumers on Platforms other than Microsoft .NET

Other features of the product

- Configurable and Visual Processes
- PALMS can handle multi-warehousing across geographies
- Replenish Automatically
- Faster response time to customer delivery requirements

INDIA

Technoforte Software Pvt. Ltd.,
42, 15th Cross, 14th Main, IV Sector,
HSR Layout, Bangalore 560 102
India

Tel +91-80-2572 9663 / 64
Fax +91-80-2572 9665
E-mail info@technoforte.co.in

U.A.E.

eTechnoforte FZC
Q3-218, SAIF Zone
120094, Sharjah
United Arab Emirates

Tel +971-6-5578053
Fax +971-6-5578054
E-mail sanjay@etechnoforte.com